

# **UPSMON Manager**

## **UPS Centralized Monitoring Software**

### **User Manual**

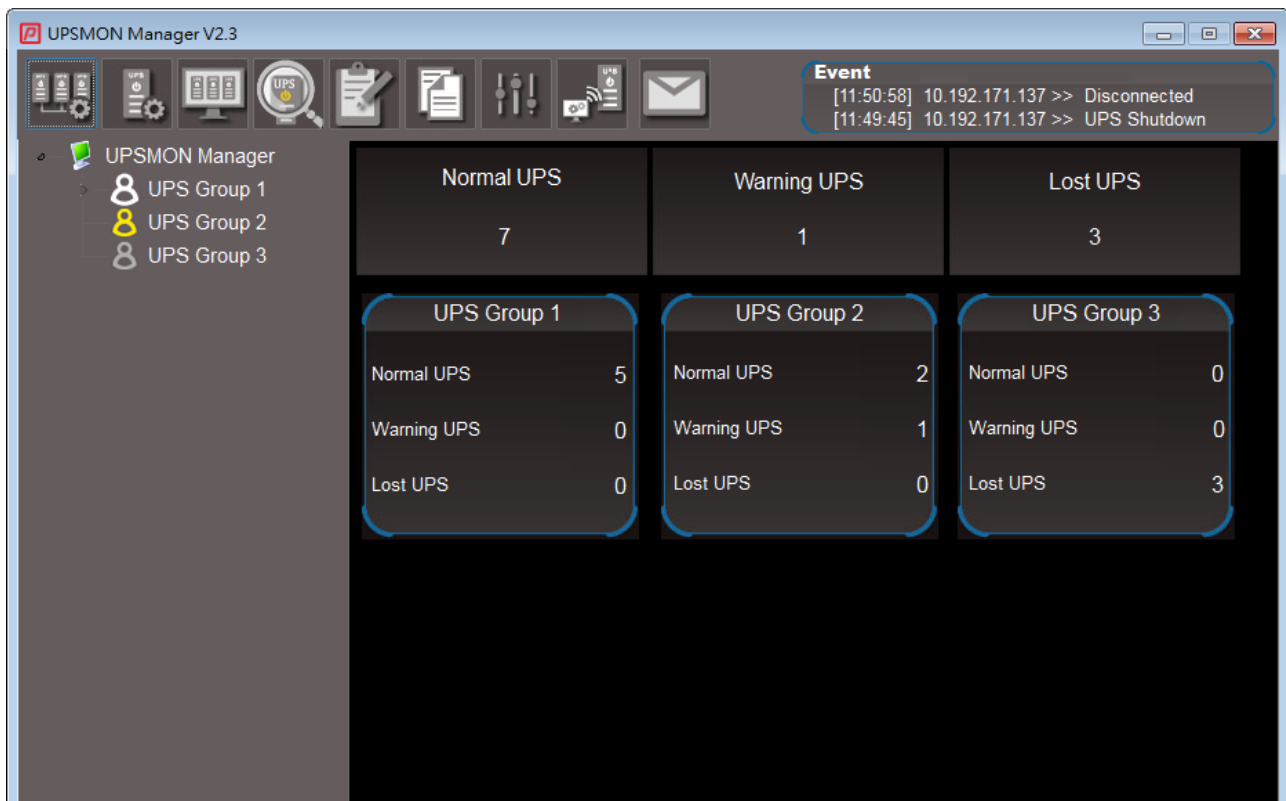
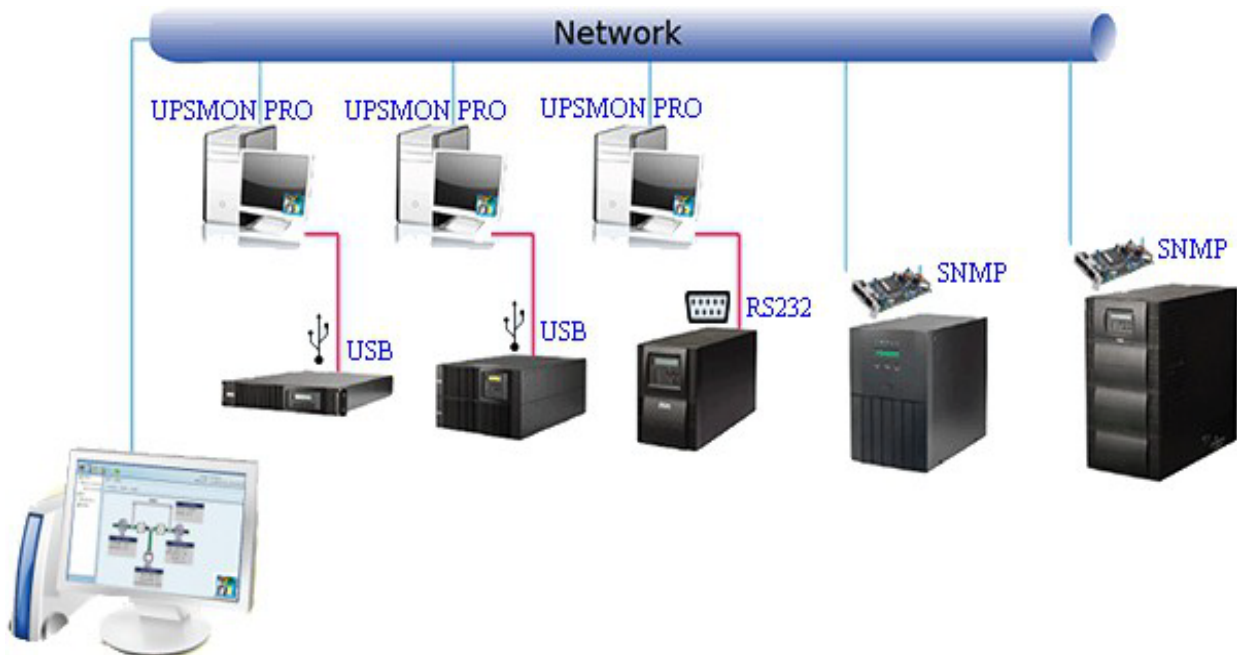
## Table of contents

<u>0. Connection method</u>	<u>3</u>
<u>A. Group list settings</u>	<u>4</u>
<u>B. UPS list setting</u>	<u>5</u>
<u>C. UPSMON Manager main screen</u>	<u>6</u>
<u>D. UPS group status</u>	<u>8</u>
<u>E. UPS status</u>	<u>9</u>
<u>F. record</u>	<u>10</u>
<u>G. record view</u>	<u>11</u>
<u>H. UPS field settings</u>	<u>12</u>
<u>I. UPS control</u>	<u>13</u>
<u>J. Email notification settings</u>	<u>14</u>

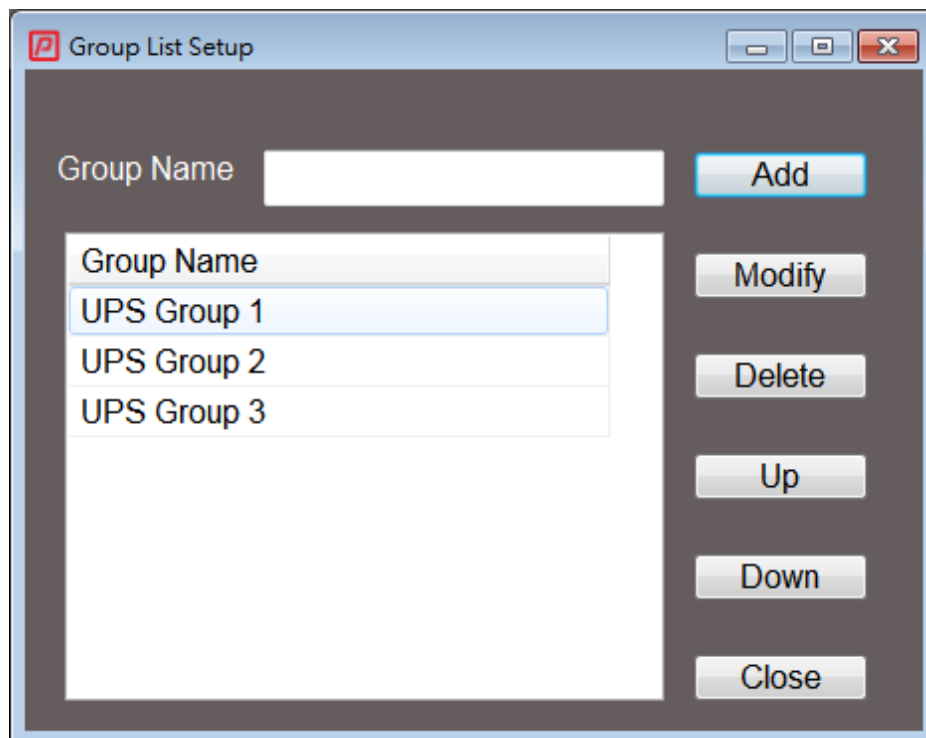
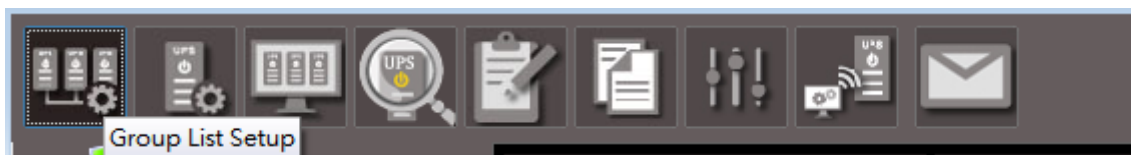
## 0. Connection method

**UPSMON Manager** Mainly monitor the UPS with two interfaces

1. **UPSMON PRO** : Connect the computer to the UPS via RS232 or USB
2. **SNMPCard** : Network connection card installed on the UPS



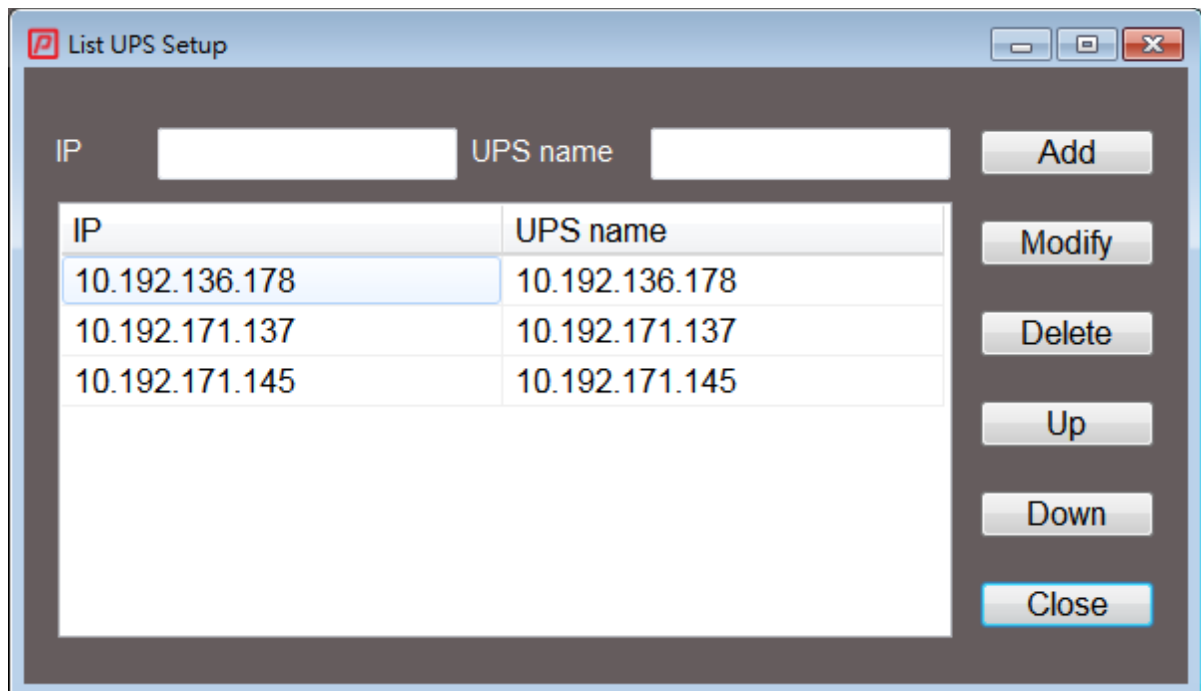
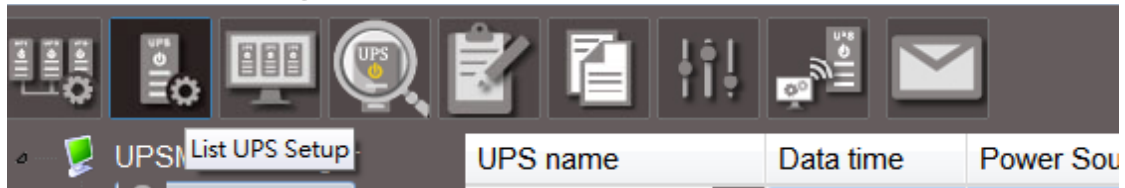
## A. Group list settings



Users can set up groups according to the UPS configuration, and can set up to 16 groups

## B. UPS list setting

In the UPS tree bar, click the UPS group you want to set, and set the UPS list of the group



**IP address:** Enter the computer IP of the UPSMON Pro or the IP of the SNMP card

**UPS Name:** You can customize the UPS name, the UPS list will be displayed with this name, if no UPS name is entered, the IP address will be used as the UPS name

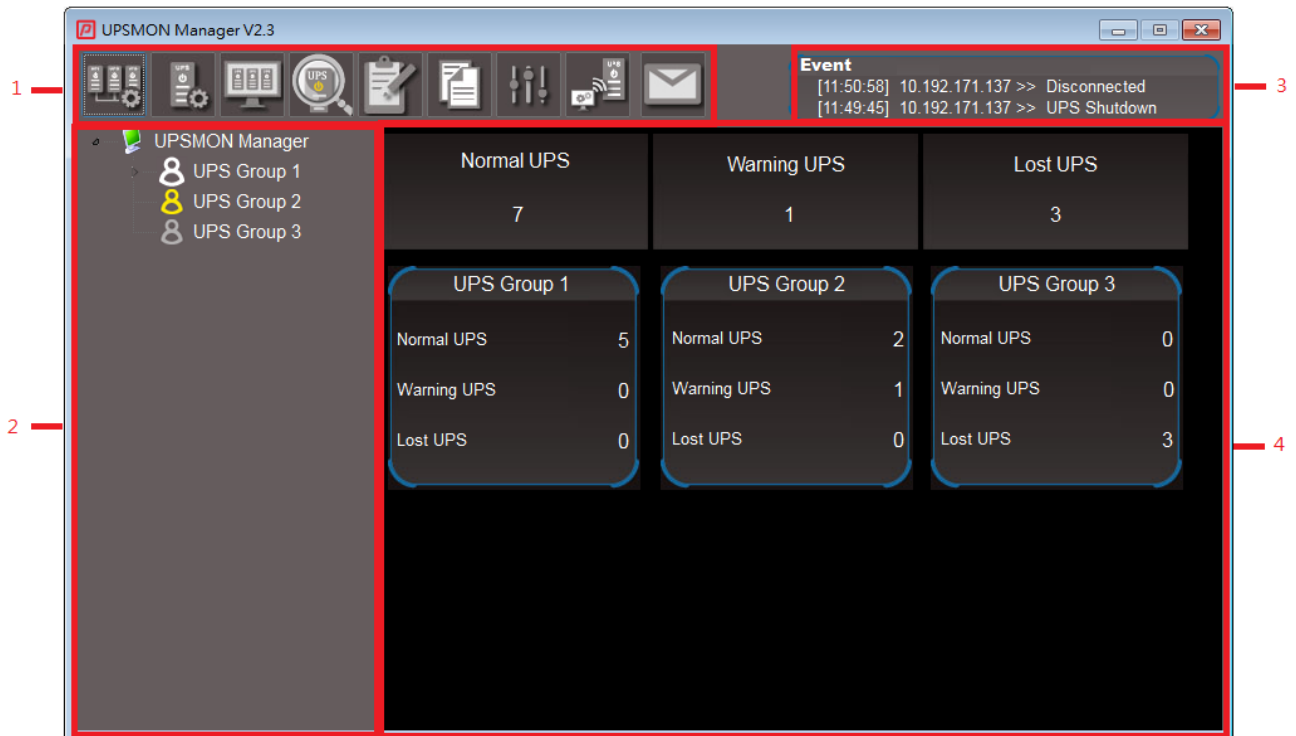
**Add:** Add input IP

**Modify:** Modify the entered data to the selected data

**Delete:** delete the selected data








**Up, Down:** Adjust the top and bottom order of the UPS list



## C. UPSMON Manager main screen



1. **Function column:** enable various functions of UPSMON Manager

2. **UPS tree bar:** Display UPS group status and UPS list status

	UPSMON Manager root directory
	Group status is normal
	Group Status Warning: The group has a UPS warning status
	Group status abnormal: the group has UPS abnormal status
	Group status connection abnormal: the group has UPS disconnection
	UPS status is normal
	UPS status warning

	UPS status abnormal
	UPS outage

Warning status: UPS is in bypass, boost or buck status

Abnormal state: UPS power failure, overload, abnormal battery or UPS failure state

**3. Event prompt column:**Display the last two event records

**4. Information display area:**UPS tree bar, click on the root directory of UPSMON Manager

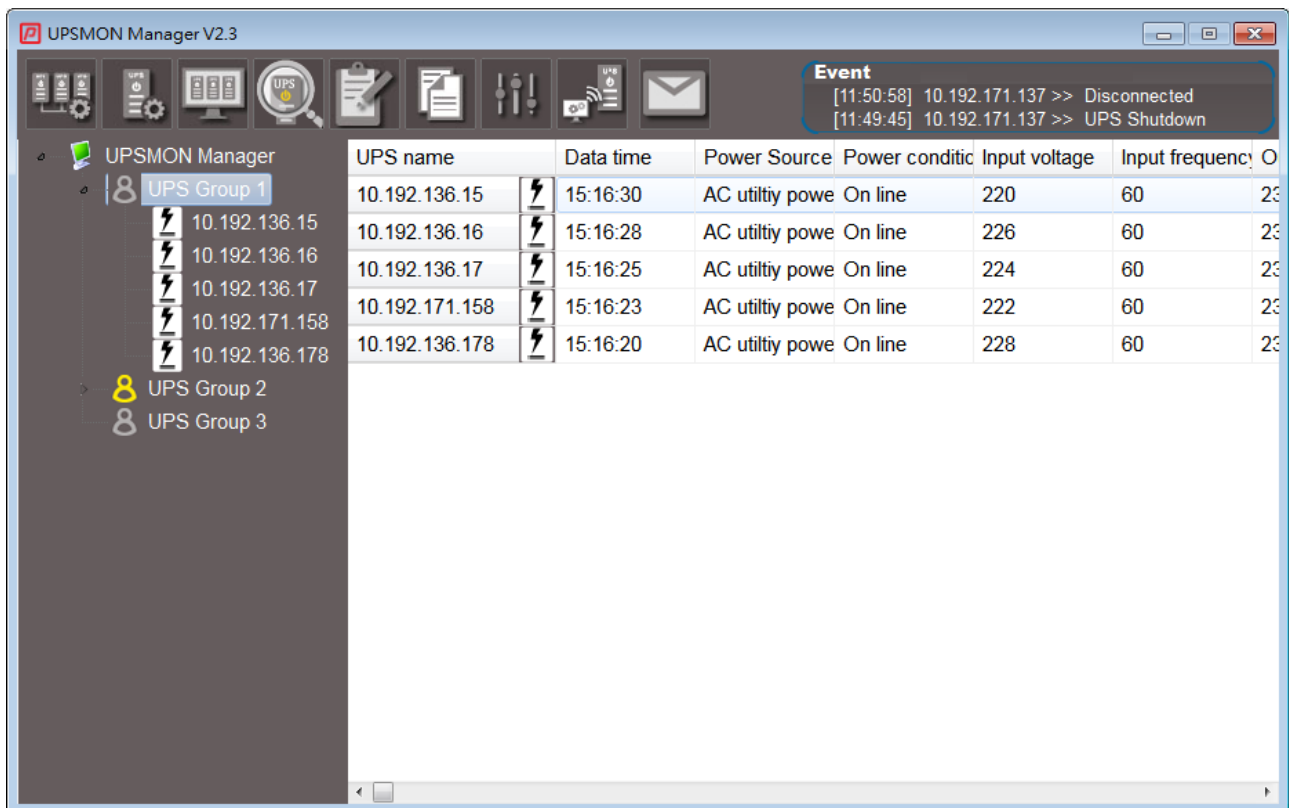
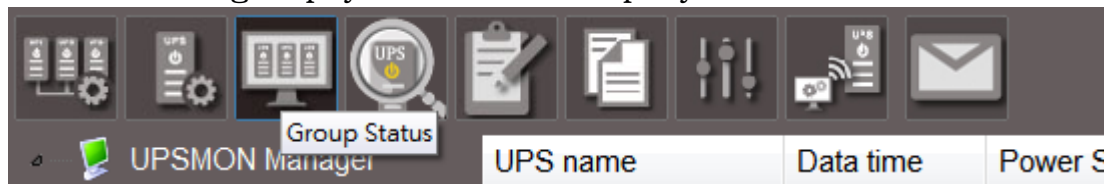
Normal UPS		Warning UPS		Lost UPS	
7		1		3	
UPS Group 1		UPS Group 2		UPS Group 3	
Normal UPS	5	Normal UPS	2	Normal UPS	0
Warning UPS	0	Warning UPS	1	Warning UPS	0
Lost UPS	0	Lost UPS	0	Lost UPS	3

The first block shows the status of all monitored UPS

The second block shows the UPS status of each group

## D. UPS group status

Click on the UPS group you want to display in the UPS tree bar

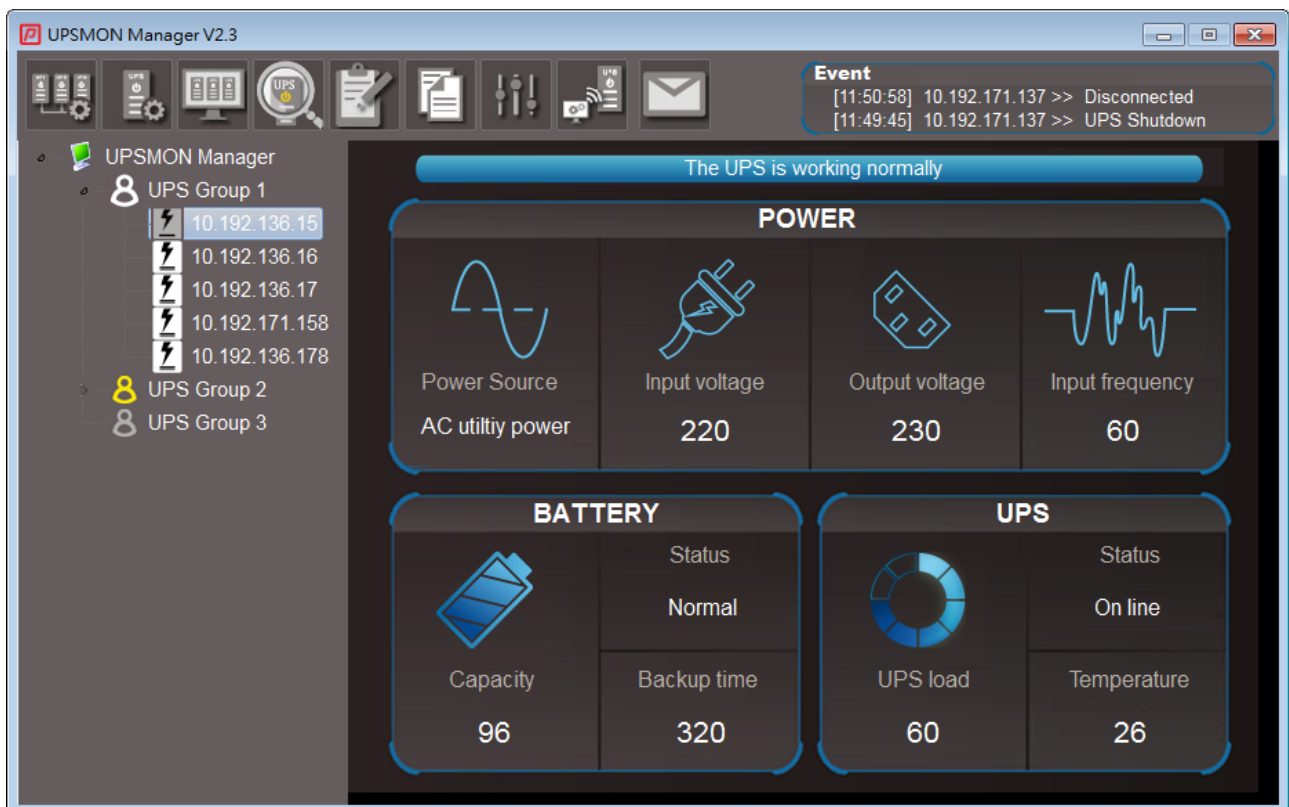
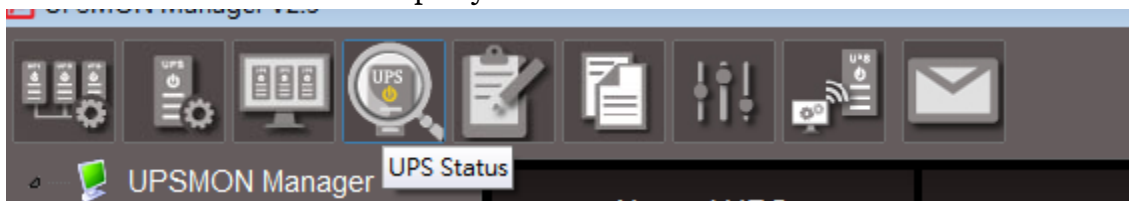


The UPS information display area will display the values of the UPS in the group in a list.

The name and order of the fields to be displayed by the UPS can be adjusted by the UPS field settings

## E. UPS status

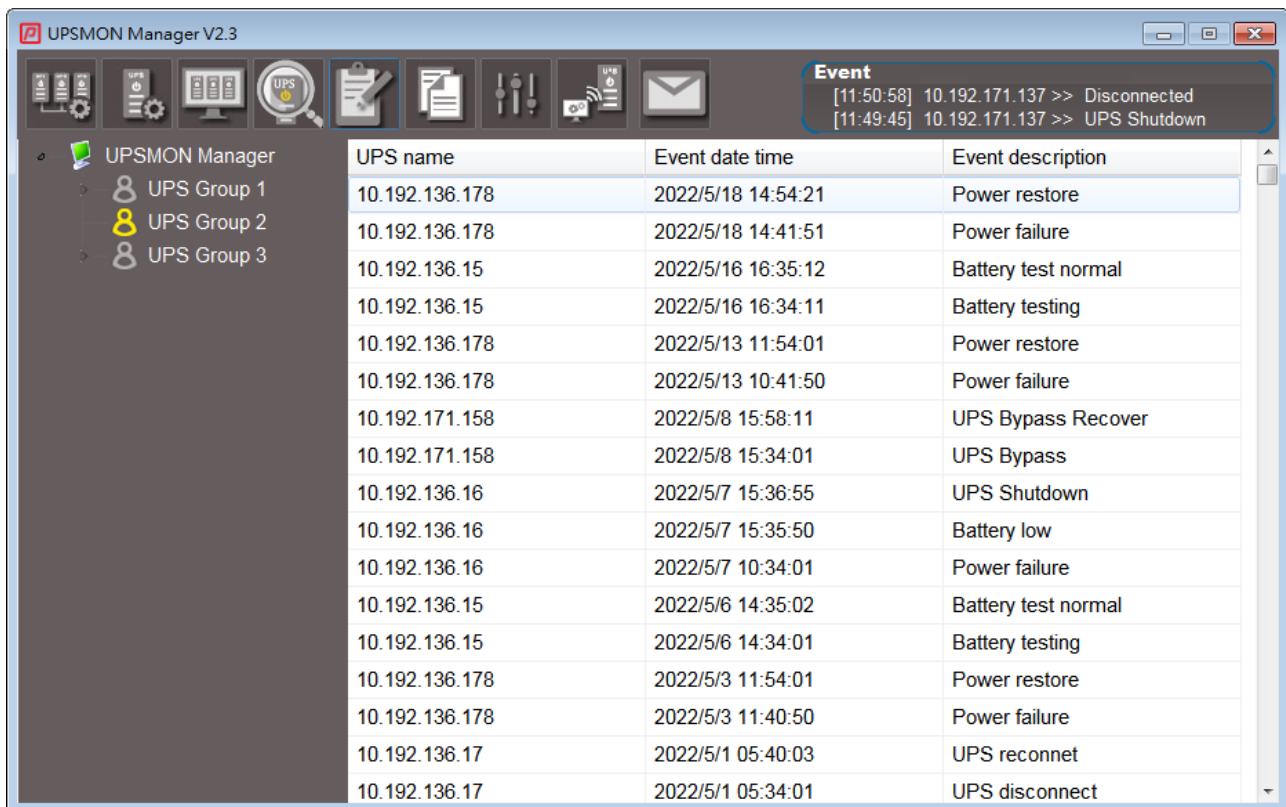
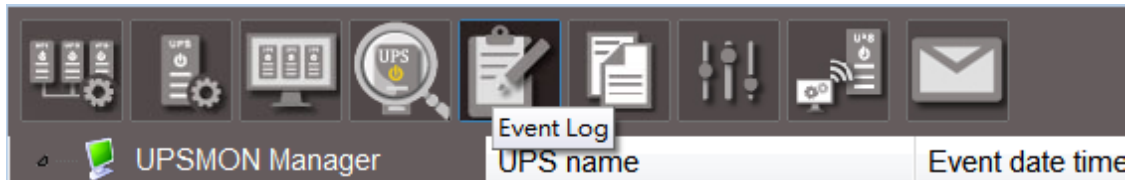
Click on the UPS to be displayed in the UPS tree bar



The UPS information display area will display various values of the UPS in the form of icons

## F. Event Recording

Click on the UPS in the UPS tree bar, and the information display area will display the UPS events as a graph

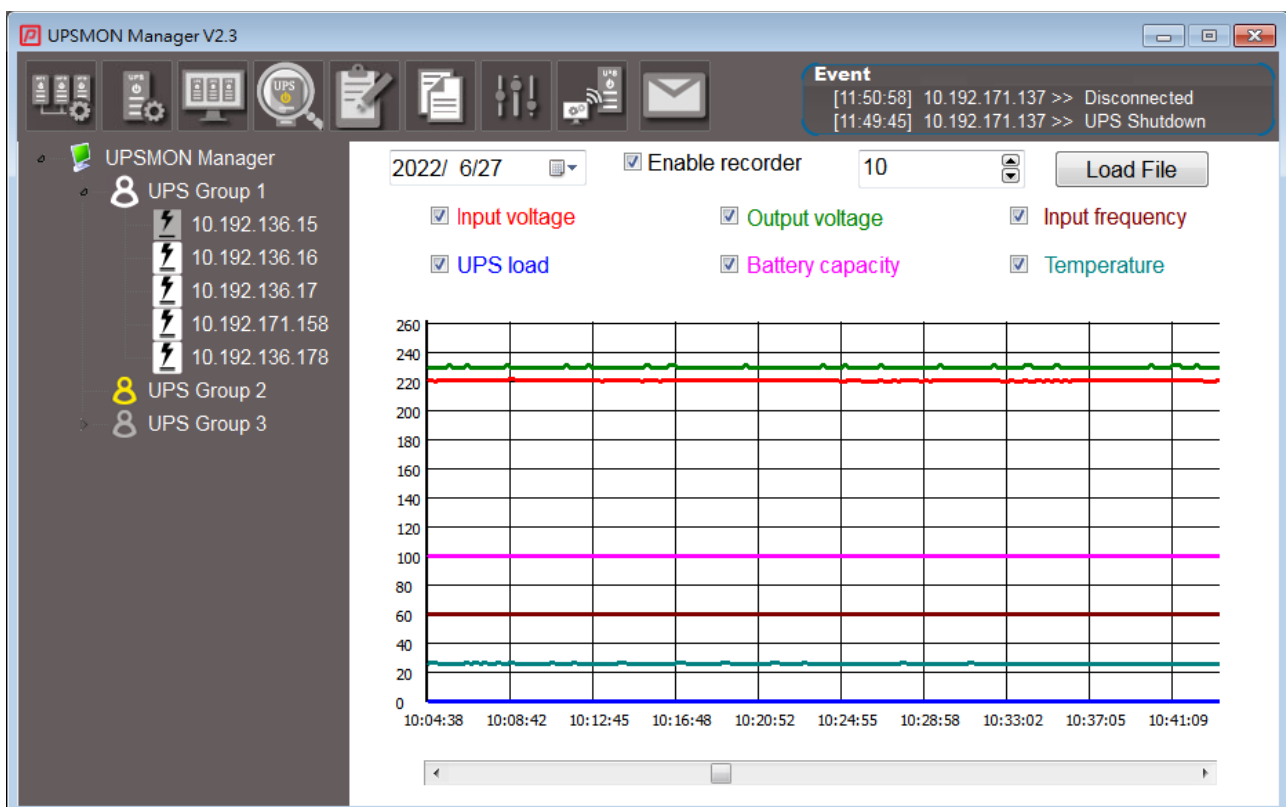
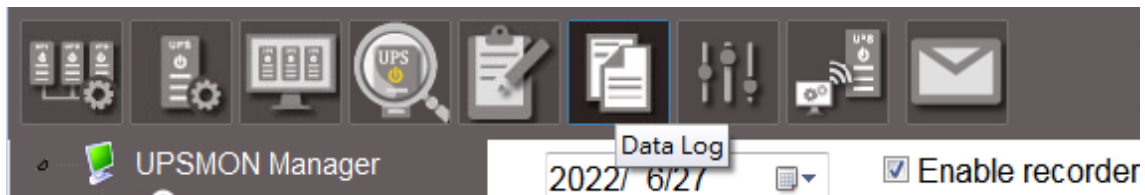
A screenshot of the UPSMON Manager V2.3 main window. The window has a title bar 'UPSMON Manager V2.3' and a toolbar at the top. On the left is a tree view with 'UPSMON Manager' expanded, showing 'UPS Group 1', 'UPS Group 2', and 'UPS Group 3'. The main area displays a table of UPS events. The table has three columns: 'UPS name', 'Event date time', and 'Event description'. The table contains 18 rows of event data. A status bar at the bottom shows two recent events: '[11:50:58] 10.192.171.137 >> Disconnected' and '[11:49:45] 10.192.171.137 >> UPS Shutdown'.

The UPS list will display new UPS events at the top

All event data will be stored as CSV files in the  
C:\Users\Public\UPSMONProManager\ directory

## G. Record View

Click on a UPS in the UPS tree bar, and the information display area will display the data records of the UPS in the form of graphs



**Date selection:** You can choose the date of the displayed historical data

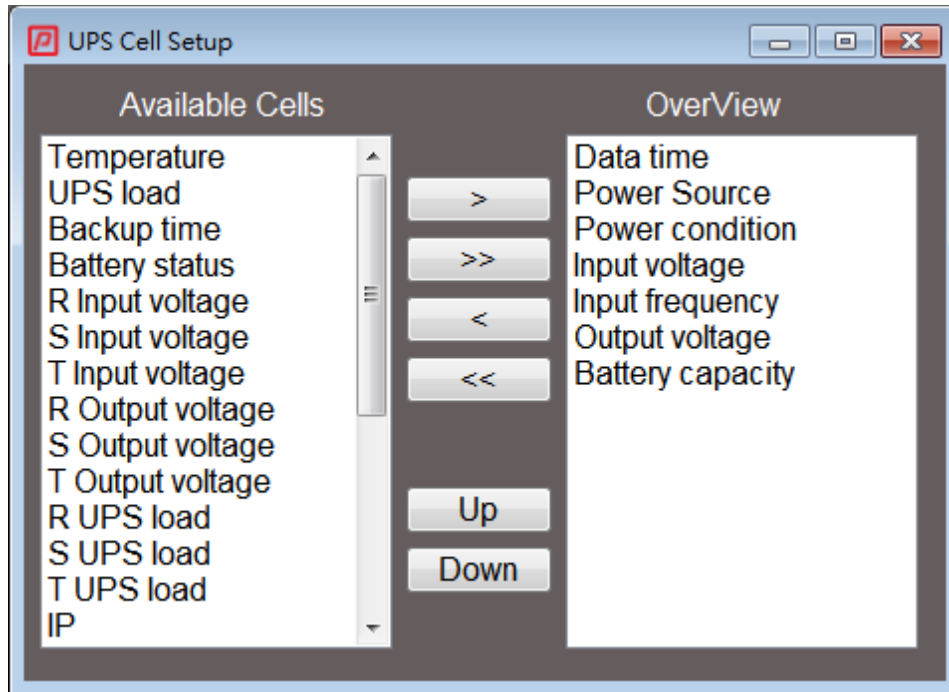
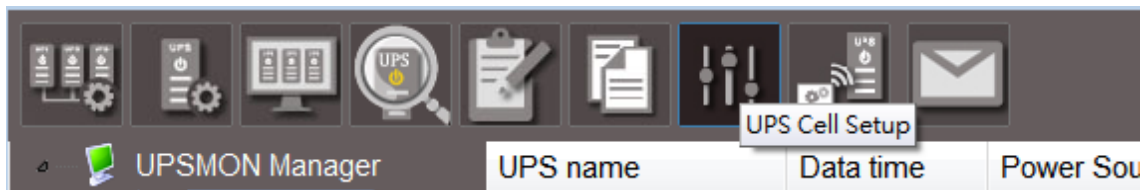
**Enable logging function:** The initial setting does not enable data logging. To use the logging view, you must enable this feature and set the data sampling interval in seconds

**Load File:** can load data files (CSV files) recorded by UPSMON Manager on other computers

**Data selection area:** you can choose the values to be displayed in the recording area

\* All log data will be stored as CSV files in  
C:\Users\Public\UPSMONProManager\ directory

## H. UPS field setting



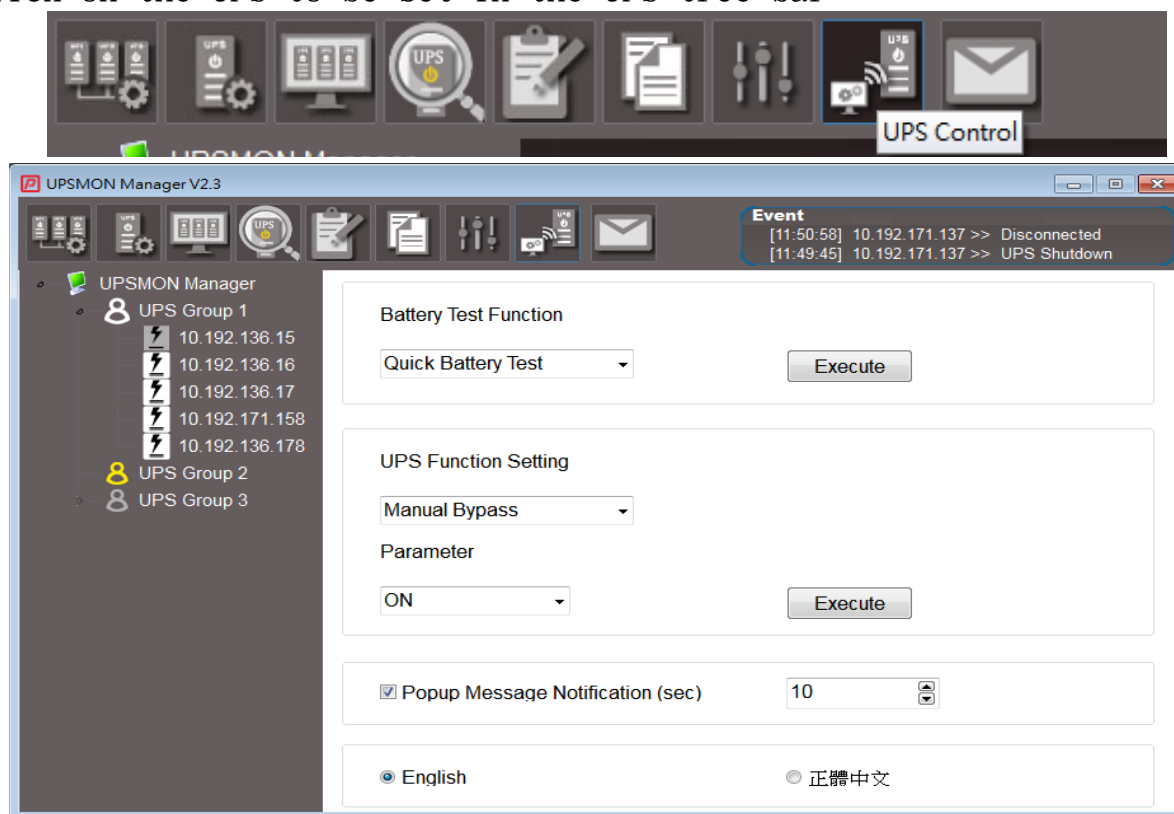
Set the field name displayed in the UPS group list

The fields to be displayed in the UPS group list can be selected from the optional fields

And set the order of the fields by the up and down buttons

## I. UPS control

Click on the UPS to be set in the UPS tree bar



**Battery test function:**

Short battery discharge test	The UPS will briefly switch the battery supply to test whether the battery can be discharged normally
Discharge test to maintain battery low voltage	The UPS will switch to battery power until the battery is low, testing how long the battery will be able to discharge in the event of a power outage
Cancel battery discharge test	The battery test can be canceled when the battery performs a discharge to low voltage test

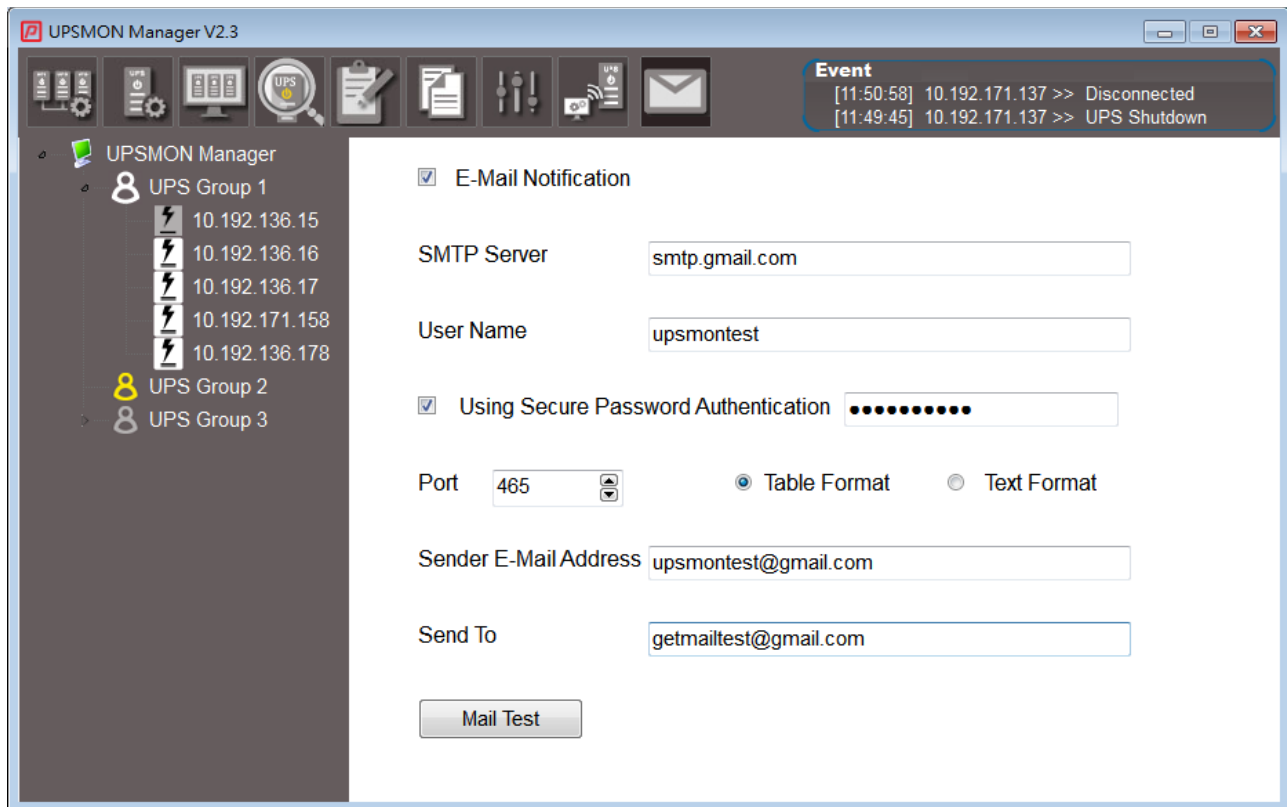
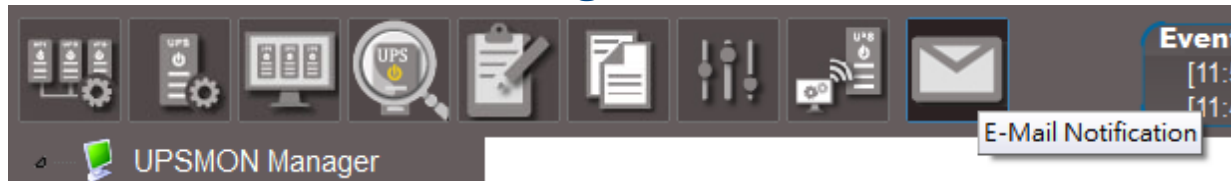
**UPS function setting (Outlet1, Outlet2 only have this function for specific UPS models)**

parameter	ON	OFF
Manual bypass setting	UPS switched to bypass	UPS goes to normal mode
UPS switch	UPS turns on output	UPS shuts down output
Outlet1	Socket 1 turns on the output	Socket 1 turns off the output
Outlet2	Socket 2 turns on the output	Socket 2 turns off the output

parameter	10%	15%	OFF
High Efficiency Mode Settings	When the input voltage is within 10% of the rated voltage, the inverter does not turn on	When the input voltage is within 15% of the rated voltage, the inverter does not turn on	turn off this feature

**Message notification:** When an event occurs, whether UPSMON Manager displays the message in a window, and the window message stays in seconds

## J. Email Notification Settings



Enable email notifications, UPSMON Manager will send emails to notify recipients when an event occurs in the UPS

For related settings, please refer to the mail server settings

The above example is an example of a gmail email

After setting, you can press the mail test to confirm whether you have received the UPSMON Manager mail test letter